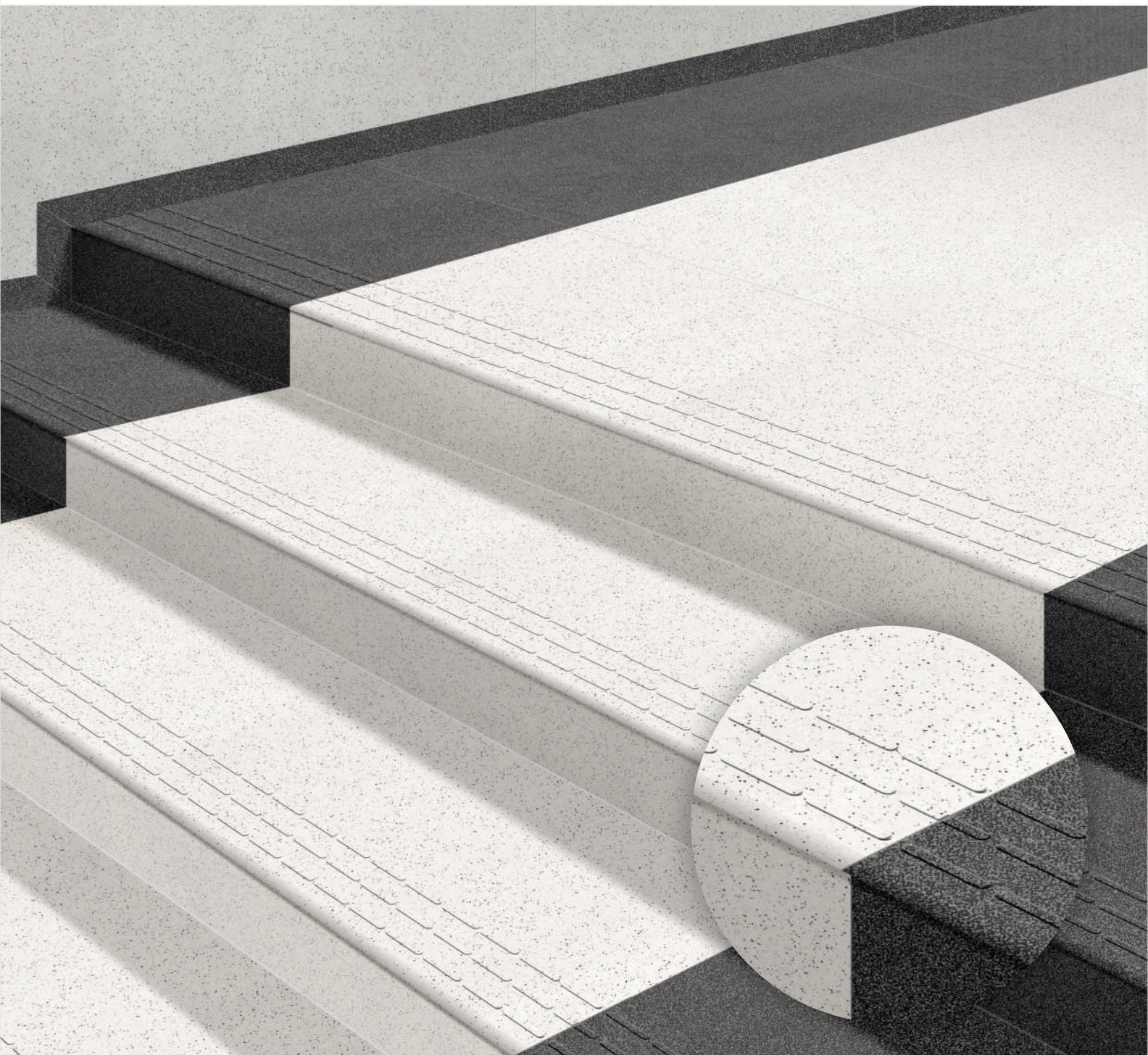




# STEP STONE

READY TO INSTALL VITRIFIED STEPS

300x1200 MM STEP | 200x1200 MM RISER

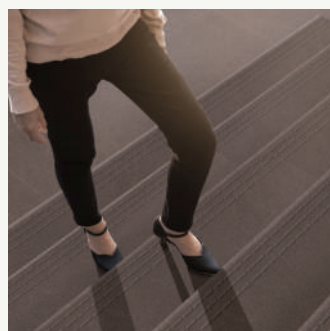


ONE SURFACE. MANY POSSIBILITIES

**POLISHED**  
VITRIFIED TILES

**Kajaria**





# STEP STONE

300x1200 MM STEP | 200x1200 MM RISER

## READY TO INSTALL STEPS AND RISERS

Stairs and staircases are not defined by their functionality alone. These practical units are also interesting from a design perspective as well-appointed stairs are today a defining feature in houses, rooms or hallways. Kajaria Step Stone Vitrified Steps and riser comes with different colours and shades, suits to your interior and exterior spaces.

# STEP STONE

READY TO INSTALL VITRIFIED STEPS



SELF EMBOSSED  
TREAD LINES



ANTI SKID  
SURFACE



BULL NOSE  
FINISH



THICKNESS  
12 MM (STEPS)



WATER  
ABSORPTION  
<0.05%



FULL BODY  
VITRIFIED STEPS



EASY  
LAYING

Highly durable, ideal for heavy traffic and commercial areas, Indoor & Outdoor.

Easy and speedy installation. Say goodbye to cumbersome cutting and finishing on site.

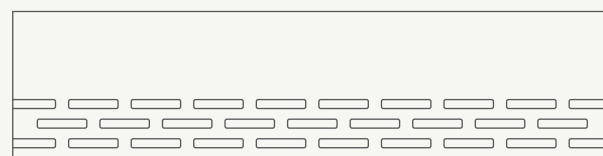
Embossed Tread Lines Provide extra grip for higher safety near step edge. Unique full bull nose edges

Provides higher strength and durability as desired in big size slabs. An assurance to replace natural stones in a confident way. Highest abrasion resistance

Ensures 10 times superior surface protection against wear and tear over natural stones.

Available in 8 beautiful Salt & Pepper shades. Suits the building theme, décor and desired contrast.

Sizes available



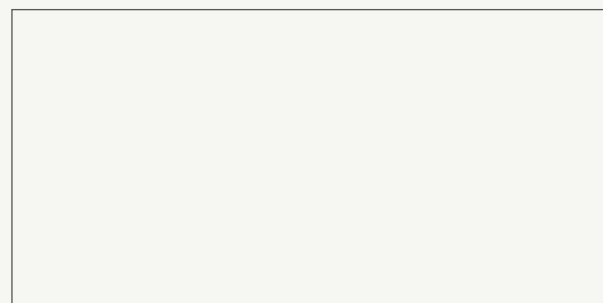
steps

300x1200mm



riser

200x1200mm



landing area tile

600x1200mm



# READY TO INSTALL VITRIFIED STEPS

## SELF EMBOSSED GROOVES

Provides Better Grip

## BULL NOSE FINISH

Prevent Injuries from Sharp edges

## ANTI SKID PROPERTY

Coefficient of Friction  
( $\mu > 0.4$ )

## FULL BODY VITRIFIED TILES

Homogeneous Body

## THICK BODY

Thickness 12 mm (Steps)



# STEP STONE

READY TO INSTALL VITRIFIED STEPS

## FEATURES & BENEFITS

### Concepts for Designing

Step Stone by Kajaria are available in different designs and colours. As high-quality tiles, they meet the technical requirements of different standards for the production of stairs. The comprehensive concepts comprising basic, décor and functional tiles can be used for a durable and aesthetically pleasing design of the entire indoor & outdoor stair area.

### Safety for Senior Citizens, Physical disables and Children

Safety is always the number-one priority. It is safe enough for senior citizens, physical disables and children. In addition to slip resistance in compliance with the applicable standards, Step Stone Vitrified tiles offer particular durability and also easy-care properties. These full-bodied tiles come with bull nosing and tread lines that make them skid-resistant and much more safer than conventional stairs.

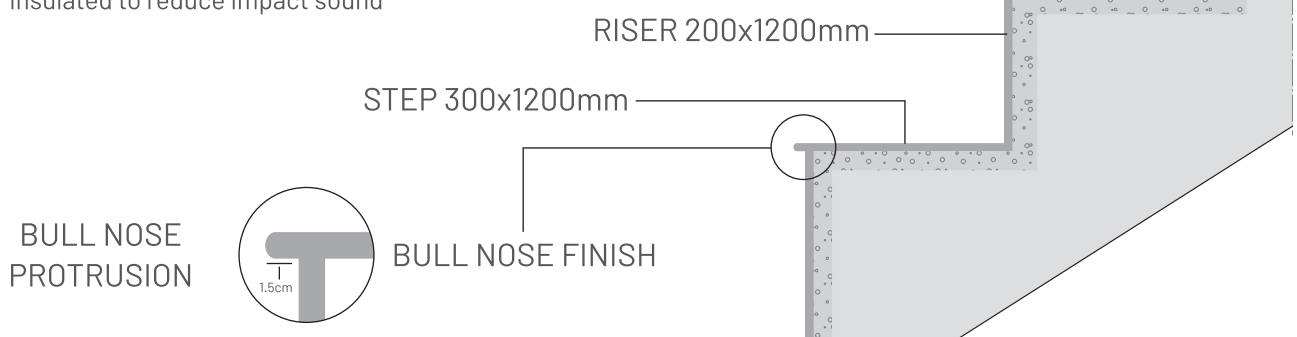
### Long Lasting & Easy Maintenance

Step Stone are full-bodied vitrified tiles, which means they absorb very low water and are impervious to weather or wear and tear induced damage. Fit them and forget them for years of trouble free performance.

### Easy Installation

No more handling issues. No more labour-intensive on-site installations, no more wastage costs. Kajaria Step Stone can be easily and speedily installed on site. Chipped and worn out staircases, constant need for polishing and repairs, are all things of the past.

Prefabricated stairs with bearing surface  
insulated to reduce impact sound





Kajaria Step Stone Steps are available in 300x1200mm. These can be used in full size and in cut size as depending on the requirement. While the riser tiles are available in a convenient size of 200x1200mm. For stairs requiring higher width, cut - contrast shades can be used on either side to get the wider stairs.



GRANITE	STEP STONE
Variation in Shade, Color, Density	Unpack Box, No Color, Density variation
Has to cut in sizes	Ready to Lay Tiles
Bull nosing, Half nosing will need to done	Ready Bull nose
Cut Grooves need to be done	Ready Emboss grooves
Longer Installation time	Easy to Install
High cost	Lower cost than granite
Affected by Weather hot/cold	Impervious to weather
High Maintenance	Easy to maintain





12351 | STEP

300x1200MM



12251 | RISER

200x1200MM



**Kajaria**

**FULL  
BODY**  
VITRIFIED STEPS

**STEP STONE**

READY TO INSTALL VITRIFIED STEPS



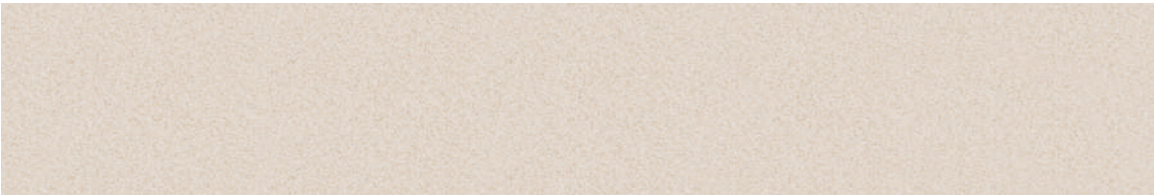
**STEP STONE**  
READY TO INSTALL VITRIFIED STEPS

**FULL  
BODY**  
VITRIFIED STEPS



12352 | STEP

300x1200MM



12252 | RISER

200x1200MM







# STEP STONE

READY TO INSTALL VITRIFIED STEPS

**FULL  
BODY**  
VITRIFIED STEPS





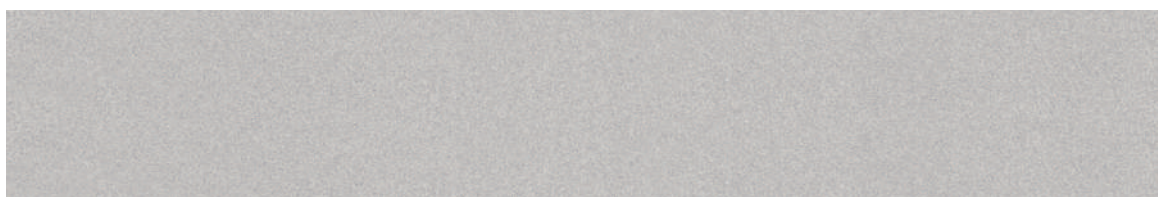






12353 | STEP

300x1200MM



12253 | RISER

200x1200MM



**Kajaria**

**FULL  
BODY**  
VITRIFIED STEPS

**STEP STONE**

READY TO INSTALL VITRIFIED STEPS

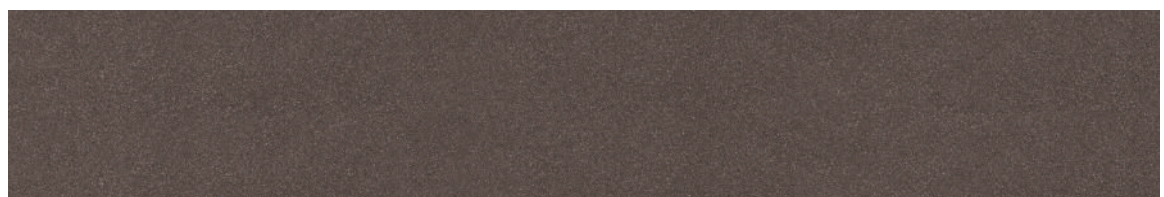






12354 | STEP

300x1200MM



12254 | RISER

200x1200MM



**Kajaria**

**FULL  
BODY**  
VITRIFIED STEPS

**STEP STONE**

READY TO INSTALL VITRIFIED STEPS









**FULL  
BODY**  
VITRIFIED STEPS

**STEP STONE**

READY TO INSTALL VITRIFIED STEPS



12355 | STEP

300x1200MM



12255 | RISER

200x1200MM



## STEP STONE

READY TO INSTALL VITRIFIED STEPS

**FULL  
BODY**  
VITRIFIED STEPS



12356 | STEP

300x1200MM



12256 | RISER

200x1200MM









12357 | STEP

300x1200MM



12257 | RISER

200x1200MM



**Kajaria**

**FULL  
BODY**  
VITRIFIED STEPS

**STEP STONE**

READY TO INSTALL VITRIFIED STEPS









**FULL  
BODY**  
VITRIFIED STEPS

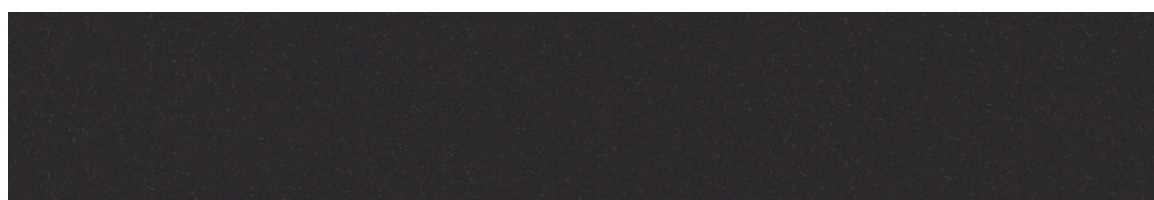
**STEP STONE**

READY TO INSTALL VITRIFIED STEPS



12358 | STEP

300x1200MM



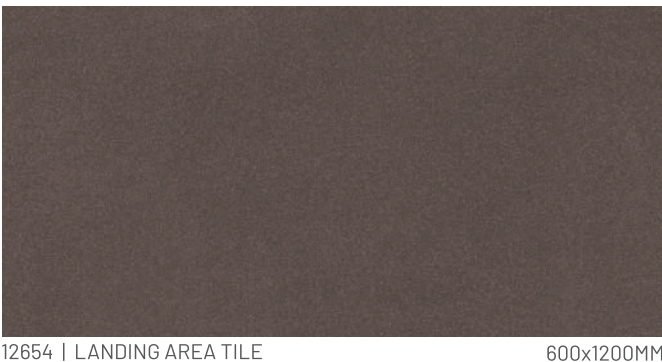
12258 | RISER

200x1200MM



MATCHING LANDING AREA TILES WITH STEPS & RISER

300x1200 | 200x1200 | 600x1200 MM







12355 | STEP

300x1200MM



12255 | RISER

200x1200MM



12655 | LANDING AREA TILE

600x1200MM



12356 | STEP

300x1200MM



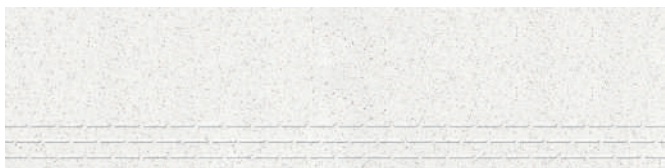
12256 | RISER

200x1200MM



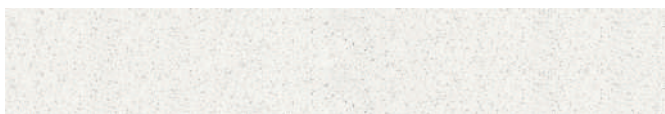
12656 | LANDING AREA TILE

600x1200MM



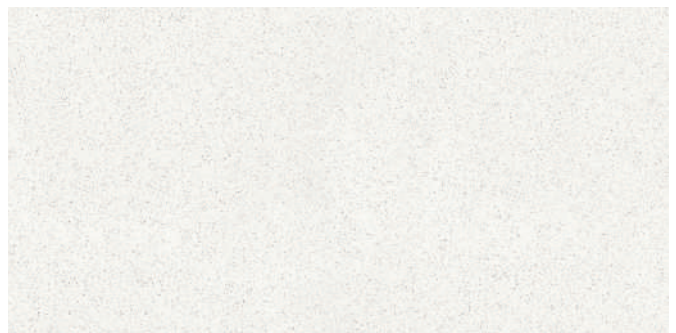
12357 | STEP

300x1200MM



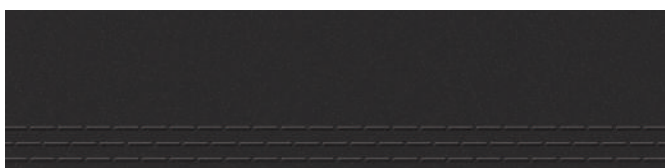
12257 | RISER

200x1200MM



12657 | LANDING AREA TILE

600x1200MM



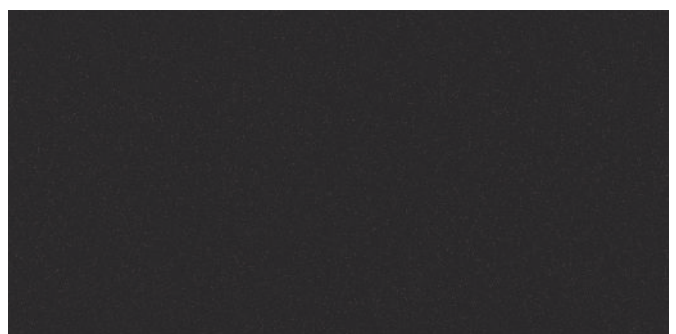
12358 | STEP

300x1200MM



12258 | RISER

200x1200MM



12658 | LANDING AREA TILE

600x1200MM



## APPLICATION AREAS



INDOOR



OUTDOOR



SWIMMING  
POOL



FIRE EXIT



UNIVERSITY



HOSPITAL



SHOPPING MALL

## Recommended Stair Step Dimensions as per National Building Code, BIS, SP : 7

Type of Building	Minimum Width	Minimum Tread	Minimum Riser
Residential buildings	1000 mm	250 mm	190 mm
Residential hotel buildings	1500mm	300 mm	150 mm
Assembly buildings like auditoria, theatres and cinemas	2000 mm	300 mm	150 mm
Educational building	1500 mm	300 mm	150 mm
Institutional buildings	2000 mm	300 mm	150 mm
All other buildings	1500mm	300 mm	150 mm
2 storeyed - LIC Urban Areas	600 mm	225 mm	200 mm
3 or more storeyed - LIC Urban Areas	750 mm	250 mm	200 mm

Note: Straight flights of steps are preferred by ambulant disabled people. Steps should be of a consistent height and depth throughout the stair. Stairs shall be constructed of non-combustible materials throughout.



# STEP STONE

READY TO INSTALL VITRIFIED STEPS

## TECHNICAL SPECIFICATION - FULL BODY VITRIFIED TILES

S. No.	CHARACTERISTIC	International Standards Group B1a- ISO 13006 Annx. G.	MEAN VALUE OF KAJARIA	TEST METHOD
Dimensions & surface Quality				
1.	Deviation in length and width	± 0.6%	± 0.1%	ISO 10545:2
2.	Deviation in thickness	± 5%	± 4%	ISO 10545:2
3.	Deviation in Straightness of sides	± 0.5%	± 0.1%	ISO 10545:2
4.	Deviation in Rectangularity	± 0.6%	± 0.1%	ISO 10545:2
5.	Deviation in Surface Flatness	± 0.5%	± 0.2%	ISO 10545:2
6.	Surface Quality (%)	Minimum 95%	No visible defects	ISO 10545:2
Physical charactersitics				
7.	Scratch Hardness of surface Moh's scale	Min. 6	Min. 6	ISO 10545:3
8.	Water absorption	≤ 0.5%	≤ 0.05%	ISO 10545:3
9.	Moisture Expansion	Nil	Nil	ISO 10545:10
10.	Surface Abrasion Resistance	max 175mm <sup>3</sup>	≤ 144mm <sup>3</sup>	ISO 10545:7
Mechanical charactersitics				
11.	Breaking strength	1300 n	≥ 2200 n	ISO 10545:4
12.	Modulus of rupture	≥ 35 N/mm <sup>2</sup>	≥ 35 N/mm <sup>2</sup>	ISO 10545:4
13.	Impact resistance	Declared by manufacturer	no indentation or cracking	ISO 10545:5
Safety charactersiticsDensity				
14.	Density	2.20 gm/cc	2.34 gm/cc	DIN 51082
15.	Skid resistance	-	More than R10 (60x60cm x 9.7mm)	DIN 51130
Thermo photo charactersitics				
16.	Thermal shock resistance	Resistant to 10 cycles	Pass min 10 cycles	ISO 10545:9
17.	Co efficient of thermal expansion	9x10 <sup>-6</sup> K <sup>-1</sup> Max	<6x10 <sup>-6</sup> K <sup>-1</sup> Max	ISO 10545:8
18.	Frost resistance	Resistant	Resistant	ISO 10545:12
19.	Color Resistance to UV light	Resistant	Resistant	ISO 10545:16
Chemical characteristics charactersitics				
20.	Stain Resistance	Resistant	Resistant	ISO 10545:14
21.	Chemical Resistance HOUSE HOLD CHEMICAL & SWIMMING POOL SALT	min class-UB	Conform to classes-UA	ISO 10545:13
22.	Chemical Resistance LOW CONCENTRATIONS ACID & ALKALIES	min class-ULB	Conform to classes-ULA	ISO 10545:13
23.	Chemical Resistance HIGH CONCENTRATIONS ACID & ALKALIES	min class-ULB	Conform to classes-UHA	ISO 10545:13

## PACKING DETAILS

S. No.	Dimensions ( mm)	No. of tiles / box	Coverage Area
1.	200x1200	6 Pcs.	1.44 Sq. Mtr.
2.	300x1200	4 Pcs.	1.44 Sq. Mtr.
3.	600x1200	2 Pcs.	1.44 Sq. Mtr.

\* Vitrified tiles have resistance to most of the stains/chemicals but, it is recommended to take due care while laying and for day-to-day maintenance.  
# Resistance to acids & alkalis (Exception Hydrofluoric Acids & its Compounds)

- Colours in the catalog are as accurate as printing process allows
- Sizes mentioned in the catalog are the nominal sizes only.
- Conforming to ISO requirements, technical specifications for Kajaria tiles are applicable only for 1st quality tiles.
- Please inspect all tiles prior to installation; company will not entertain complaints, once tiles are laid / fixed.
- For better laying, please follow the instructions on the packaging box.



### **Why Kajaria Step Stone is the new benchmark in the world of staircases?:**

Natural stones have been the mainstay of staircases. These stones are not easy to install and are slippery. Moreover, due to lack of uniformity in size, there is a higher wastage cost. Kajaria Step Stone is a revolutionary tile which sidesteps all the complications associated with natural stones. Also, Kajaria Step Stones comes in a convenient size of 300x1200 mm Step with bull nosing and tread lines, 200x1200 mm Riser and 600x1200 mm Landing area tiles in matching colour. This size ensures it meets the design requirements of most staircases.

### **How Kajaria Step Stone is different from others?**

Safety and durability are the cornerstones of Kajaria Step Stone. As a full-bodied Vitrified Tile, it encompasses a high degree of strength with antiskid and stain resistant properties, which makes it a safe and excellent choice, especially for people with ambulant disabilities.

### **What are the advantages of full bull nose edges?**

Kajaria Step Stone is a Full body Bull Nosed vitrified step tile. The unique bull nosing makes the staircase safer and comfortable to step on. It also helps to prevent chipping along edges and gives the staircase an aesthetically pleasing look.

### **What is the purpose of embossed tread lines?**

The embossed tread lines provide extra grip when stepped on, especially near the edges of the steps. This ensures higher safety, preventing people from falling down and risking injuries.

### **What are the benefits of thicker tiles?**

For staircases, it makes sense to have strong tiles which Kajaria Step Stone is owing to its thickness. It ensures safety, lends confidence and assures replacement to natural stones.

### **What are the other benefits of using Kajaria Step Stone?**

The ease and speed of installation, low water absorption (<0.05%) with advanced stain resistance technology. Also due to its high abrasion resistance it provides 10 times more surface protection than natural stones.



## NORTH

### CHANDIGARH

SCO- 45-46-47, first floor, sector-17A,  
opp. Taj Hotel, Chandigarh-160017  
Mobile : 9779042134, 9779009264  
Phone : 0172- 4631419 / 16

### DELHI

J-1/B-1 (Extn.),  
Mohan Co-Operative Industrial Estate,  
(Opp. Badarpur Thermal Power Station),  
Mathura Road, New Delhi - 110 044. (Delhi)  
Mobile : 9717795123, 9717795181

### DEHRADUN

International Trade Tower, 1 Old Survey Road,  
Adjoining Rajpur Road,, Near Cross Road Mall  
Dehradun - 248001, Uttarakhand  
Mobile : 97600 40499

### JAIPUR

G-1-2, Aishwarya Tower,  
Near Hotel Hawa Mahal, Ajmer Road,  
Jaipur-302005, (Rajasthan)  
Mobile : 9929022124

### LUDHIANA

Upper Ground Floor, Sandhu Tower-2,  
Gurdev Nagar, Ferozpur Road,  
Ludhiana - 141001, Punjab  
Mobile : 9779021257

### LUCKNOW

529 GHA/06, Kanchana Bihari Marg,  
Near Jagrani Hospital, Ring Road  
Lucknow - 226016 (U.P)  
Mobile : 9793299660, 8173001374

### VARANASI

Rukmani Tower, N8/247-2K-1, DLW,  
BHU Road, Newada, Sunderpur  
Varanasi-221005, Uttar Pradesh  
Mobile : 9794865554, 9005065656

## SOUTH

### BANGALORE

Farah Icon, 119 First Floor  
Opp. New Pass Port Kendra, Lalbagh Road,  
Bangalore – 560 027, (Karnataka)  
Mobile : 9008098325, 9008007336, 90082 78672

### CHENNAI

Old No.121, New No.38, Arihant jashn Building,  
Rukmani Lakshminipathi Salai,  
Opp to Rajarathinam Stadium, Egmore  
Chennai - 600008, TamilNadu  
Mobile : 9003077099  
Phone : 044-28594990 / 28594991

### COCHIN

MN Square, 1st Floor  
549/2, Near Gold Souk Grande  
NH Bypass, Vyttila, Cochin- 19, (Kerala)  
Mobile : 9746474732, 9746474739, 9746474733

### COIMBATORE

First Floor , No.57, Cowley Brown Road,  
R.S Puram, Coimbatore - 641002, (Tamil Nadu)  
Mobile : 9003325075

### HYDERABAD

Keerthi & Pride Towers, House No. 8-2-120/86/1&2,  
3rd Floor, plot No.11 & 12, Road No.2, Banjara Hills  
Hyderabad-500034, (Telangana)  
Mobile : 9000005385

### VIJAYWADA

61-3/4-1, 1st Road, Geetha Nagar, Beside SBI Bank,  
NH-5,Vijaywada-520013, (Andhra Pradesh)  
Mobile : 7799660222, 9000302776

## WEST

### MUMBAI

B1-307, BOOMERANG, Chandivali Farm Road,  
Near Chandivali Studio, Off Saki-Vihar Road,  
Andheri (E) Mumbai - 400072, (Maharashtra)  
Mobile : 9987753947,9987753948

### NAGPUR

Parthamesh Raja Apartment,, Above  
Bank of Baroda, Untakhana Road,  
Medical Square, Nagpur - 440009,  
(Maharashtra)  
Mobile : 7755904583

### PUNE

601-A, D.S.K. Gandharv Heights,  
Ganesh Khind Road, Shivaji Nagar,  
Pune - 411005, (Maharashtra)  
Mobile : 7028005373

## CENTRAL

### RAIPUR

1st Floor, Maharaja Plaza, Near Wholesale  
Fruit Market, Dhamtari Road, Lalpur  
Raipur-492001, Chhattisgarh  
Mobile : 9755007408

## SALES REPRESENTATIVE

## NORTH

### AGRA :

Mobile : 9760045574

### ALLAHABAD :

Mobile : 9773983600

### BHATINDA :

Mobile : 9501001162

### FARIDABAD :

Mobile : 9717219345

### GURGAON :

Mobile : 9717795118  
9650065523

### GHAZIABAD :

Mobile : 9810010240

### GORAKHPUR :

Mobile : 8009407878

### HALDWANI :

Mobile : 9760098112

### HISSAR :

Mobile : 9996907982

### JALANDHAR :

Mobile : 9779021261

### JAMMU :

Mobile : 9906909300

### JODHPUR :

Mobile : 9001094759

### KANPUR :

Mobile : 8173001374

### GHAZIABAD/ NOIDA :

Mobile : 9810010240

### ROHTAK :

Mobile : 9996907982

### SHIMLA

Mobile : 9501001163

### UDAIPUR :

Mobile : 9001092597

## EAST

### BIHAR :

Mobile : 7781005449

### JHARKHAND :

Mobile : 9938234060

### WB/NE

Mobile : 9007372220

### ODISHA

Mobile : 9937571222

## SOUTH

### CALICUT:

Mobile : 9746117422

### KANNUR :

Mobile : 9746474736

### HUBLI :

Mobile : 9008022099

### MADURAI :

Mobile : 9840284411

### MANGALORE :

Mobile : 9008402944

### SALEM :

Mobile : 9003842142

### TRIVANDURM :

Mobile : 9746474735

### TRICHY :

Mobile : 9003075175

### THRISSUR :

Mobile : 9746474734

### VIJAYAWADA :

Mobile : 9000005385

## WEST

### KOLHAPUR :

Mobile : 8600992617

### NASIK :

Mobile : 9730081553

### GOA :

Mobile : 7757032203

### SURAT :

Mobile : 9724340890

### BARODA :

Mobile : 9205897978

## CENTRAL

### BILASPUR :

Mobile : 9752593830

### JABALPUR :

Mobile : 9752593831

### GWALIOR :

Mobile : 9752593834

### BHOPAL :

Mobile : 7389035949



# ***Kajaria***



INDIA'S NO. 1 TILE COMPANY

## **Kajaria Ceramics Limited**

Corporate Office: J1/B1 (Extn.), Mohan Co - op Industrial Estate, Mathura Road, New Delhi - 110044, Ph.: +91-11-26946409, Fax: +91-11- 26946407

Regd Office: SF-11, Second Floor, JMD Regent Plaza, Mehrauli Gurgaon Road, Village Sikanderpur Ghosi, Gurgaon-122001, Haryana, Ph.: +91-0124-4081281

CIN No. : L26924HR1985PLC056150, E-mail: [info@kajariaceramics.com](mailto:info@kajariaceramics.com), Web.: [www.kajariaceramics.com](http://www.kajariaceramics.com)

 [facebook.com/KajariaCeramicsLimited](https://facebook.com/KajariaCeramicsLimited)  [twitter.com/KajariaCeramic](https://twitter.com/KajariaCeramic), Tollfree : 1800-11-2992

Download Kajaria App

